



# Seafloor

## datasheet

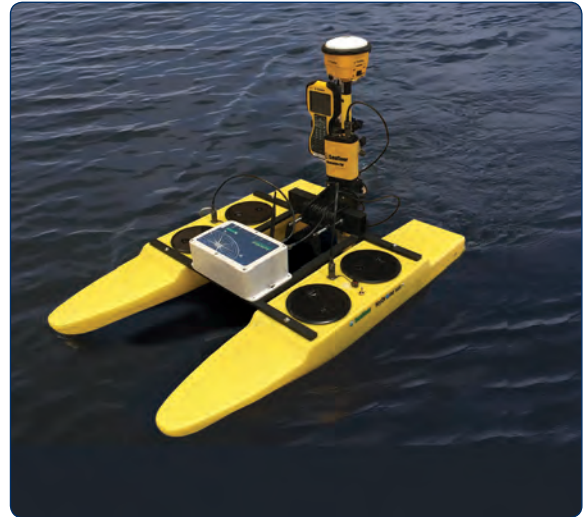
The HyDrone-RCV-G2™ is a one-man portable, remotely controlled catamaran platform developed for hydrographic survey applications. Working in conjunction with the HydroLite™ portable echosounder kit, the HyDrone-RCV-G2 accomplishes the same results as more expensive RC survey systems. The lightweight, wide profile, and watertight construction provide stability, ruggedness and portability. It is manufactured from high quality marine materials and components and easily disassembles for transport and shipping.

Work environments include mines, sewage treatment plants, contaminated lakes, harbors and rivers.

Remote control of the survey boat is easy using a high-power remote control system that offers up to 2 km range, with a survey endurance of over 8 hours at a survey speed of 3 knots on a single battery pack.

## HyDrone-RCV-G2™

Remotely-Controlled Survey Vehicle  
with **Autonomous** Option



HyDrone equipped with the HydroLite™ survey pole kit and AutoNav™ auto pilot module



Light-weight and portable



Powerful differential thrusters  
for maneuverability

- ▶ **Wide profile for stability**
- ▶ **Watertight, durable construction**
- ▶ **Up to 22 Km/h**
- ▶ **Easy disassembly for transport and shipping**
- ▶ **Competitive pricing**
- ▶ **Optional Auto Pilot module**

With our AutoNav™ option, the HyDrone is also fully autonomous; the vehicle can be monitored while under way, in both Auto and Manual modes.

The mission planner application runs on a base station laptop connected through a radio telemetry link, and displays the vehicle's graphical position and progress against a background map of the survey area. Battery voltage, current, and capacity remaining is monitored via this link.



Side view of HyDrone

## HyDrone-RCV-G2™

Remotely-Controlled Survey Vehicle  
with **Autonomous** Option

### specifications

Typical survey speed .....	3 kts / 1.5 m/s
Top speed .....	12 kts / 22 Km/hr
Hull Width .....	736mm / 29 in
Hull Length .....	1143mm / 45 in
Battery Endurance .....	8 hours
Payload .....	11.3kg / 23 lbs
Power .....	2x 16v 16 Ah battery LiPo
ECU (electronic controller unit) .....	2x 180 amp water-cooled
Motor .....	2x brushless thruster
Hull Material .....	UV resistant HDPE
Frame .....	Aluminum powder coated
Steering .....	Differential
Weight .....	9 kg / 20 lbs
Hardware .....	Stainless steel
Hatches .....	4x 7" twist-out watertight closure
R/C .....	Futaba® 2.4GHz long range
Remote Range .....	2 km

Compatibility: AshTech, Carlson, EPOCH,  
Leica, Magellan, Sokkia, Topcon, Trimble



HydroLite-TM™

### instrumentation options

- Sound velocity profiler
- RTK GPS
- Radio telemetry
- Side scan sonar module
- HYPACK software
- HydroLite-TM

HydroLite Pole Kit  
SonarMite MILSpec echosounder  
Rugged shipping case

- Auto Pilot Module

AutoNav™ Control System  
Embedded GPS and Compass  
Built-in Telemetry System  
PC laptop  
Mission Planner Application  
USB Radio Telemetry



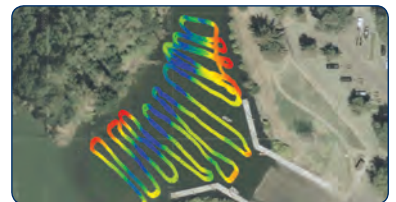
AutoNav™ Control System



HyDrone-ASV-G2™



Mission Planner application installed on a PC laptop showing preplanned survey



Survey data collected through Mission Planner on PC laptop

**Seafloor Systems, Incorporated**

4415 Commodity Way, Shingle Springs, CA 95682 · USA  
(530) 677-1019 · info@seafloorsystems.com · www.seafloorsystems.com